

Artist Profiles



Yamato Ishioka

inoriglass@yahoo.co.jp

Photo by Mee

- 1979 Born on February 17
- 2001 Enchanted by glass in the fall
- 2002 Started working with glass with others who came to Mr. Takahashi of Spiral-Arts with the same interest. Participated in shows and workshops.
- 2004 Started Glass-Meditation INORI with my partner, Mee.



I love to work with glass. I get very fascinated watching glass melting and changing its form. I feel the joy in being one of the channels of the universe and am thankful for being so. I would be happy to get acquainted with people through glass. I am thankful that I live with glass.



Miki Yoshida

kurotonakai@ybb.ne.jp

Photos by Miki Yoshida

- 1961 Born in Hiroshima
- 1998 First encounter with Tonbodama at Azumino, Nagano
- 1999 Started beadmaking under Mr. Shigemichi Yagi at Ruri Studio
- 2001 Juried in the Glass Craft Triennale
- 2003 Solo show at Gallery 718, Hiroshima
- 2004 Work featured in the second edition of *Kirameku Beads*
- 2005 Juried into *Trajectories* for ISGB

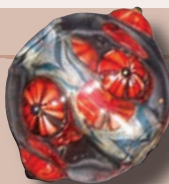


Ikuyo Yamanaka

ikuyo@shaw.ca

www.ikuyoglassart.ca

I was born in Japan where I started working glass some twenty-five years ago. After experimenting with various techniques such as stained glass and glassblowing, I decided that lampworking was my favorite technique. I specialize in glass beads and glass jewelry with silver work. In Japan, I have participated in many group and solo exhibitions, and I have been selling my work in glass museums and galleries across the country. In 2003 my family and I moved to Vancouver, and I have been selling my work since then in various glass galleries in the Vancouver area and the U.S.



Wakana Ogura

Glass Studio Hand

<http://www.glassstudio-hand.com>

- 1978 Born in Aomori, Japan
- 2001 Graduated from Iwate University with a major in agriculture
- 2001 Began studying glass under Yasuhiro Ohkama and Akihiro Ohkama
- 2002 Became a member of The International Society of Glass Beadmakers
- 2005 Work displayed at the Kobe International Lampwork Museum
- Staff Member of the Kobe International Lampwork Festa.

Wakana's work can be viewed and purchased at various galleries around Japan. She is currently Akihiro Ohkama's partner and a staff member of Glass Studio Hand.



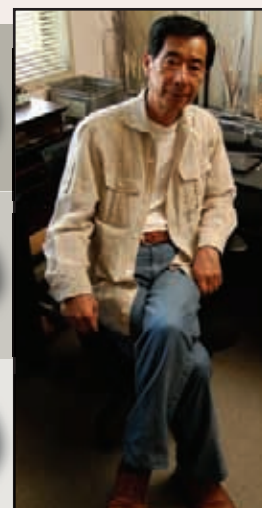
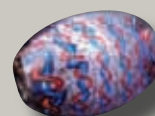
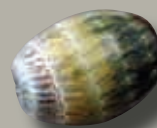
Yagi Shigemichi

www.rurikoubou.co.jp

Photos by Yutaka Horigane

- 1940 Born in Nagoya
- 1983 Started stained glass
- 1990 Started lampworking under Hisahide Miyata
- 1992 Moved to Azumino and started Glass Art Ruri Studio
- 2003 Chairman for the Japan Lampwork Festival in Azumino

My work is exhibited and sold at museum shops and glass galleries throughout Japan. I have taught at NHK Cultural Center and have exhibited at solo and group shows at galleries and department stores. My work is featured in both editions of *Kirameku Beads*. The video, *The World of Shigemichi Yagi's Twisted Canes* from A3 International and a DVD of *Azumino Tonbodama Workshops by Shigemichi Yagi* from Style Index have also been published.



Ryohsuke Shigedomi

080-3773-2567

- 2001 Began to learn glass beadmaking using an air burner
- 2001 Participated at the ISGB Gathering
- 2003 Participated in Loren Stump lampworking course
- 2004 Participated in Lucio Bubacco lampworking course
- 2005 Began working with an oxygen bench burner and took my second Loren Stump course
- 2006 Began to approach lampworking from all new perspectives.





Daisuke Takeuchi

www.rurikoubou.co.jp

Photos by Yutaka Horigane

- 1979 Born in Kyoto
- 2000 Graduated from Nara Art College in Craft Design
Joined Glass Art Ruri Studio and studied beadmaking under Mr. Shigemichi Yagi
- 2002 Solo show at René Larique Museum, Suwa City, Nagano
- 2004 Juried into Tonbodama Contest at the Fourth Tonbodama Forum
- 2005 Juried into *Trajectories*



Yutaka Horigane published video tapes, How to Lampwork Vol. 1 by Daisuke Takeuchi from A3 International and Tonbodama Workshop in Azumino by Daisuke Takeuchi in 2004.



Taeko Yamada

Studio Hitotsubou
glass@hitotsubou.com
www.hitotsubou.com

- 1959 Born in Chiba, Japan
- 1990 Graduated from Meiji University
- 1994 Created Studio Hitotsubou and main buyer at Tokyo National Museum
- 2000 Window display for Ginza Tasaki Shinju (One of the biggest pearl companies in Japan)
- 2004 Featured instructor at Niijima International Lampwork Festival



Since 1994 to the present, Taeko's work can be viewed and purchased at various galleries in Japan.

Takashi Mishima

<http://www11.ocn.ne.jp/~arms7/>

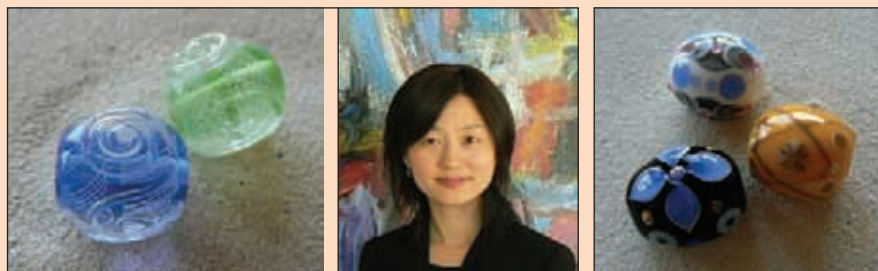
- 1974 Born in Kyoto, Japan
- 1993–2003 Worked at an accessory wholesale company specializing in accessories for Japanese Kimonos
- 2000 Started glass beadmaking
- 2003 Established his own Studio, Gallery ARMS, in Karuizawa, Japan
- 2004 Lampworking instructor at NHK Culture Center Maebasi



Minori Takagi

#1212 – 989 Nelson Street,
Vancouver, B.C. Canada V6Z 2S1
604-408-5118
minoritakagi@yahoo.ca
www.mylampwork.com

Photos by artist



Minori Takagi first came across Japanese glass beads (called Tonbodama) at a local gallery in her hometown of Shizuoka, Japan in 1997. She was so impressed by their subtle color and delicate design that she immediately took her first beadmaking class at a local studio. Using colorful Japanese glass rods called Satake, she learned the basics of Tonbodama. The lessons were only twice a month, but her skill and creativity soon became apparent. Her initial interest in making Tonbodama has developed into a lifelong passion for the art form.

In addition to spending countless hours in the studio refining her craft, she has also participated in numerous workshops both in Japan and North America. Most memorable were the ISGB Gathering in Washington, D.C. and the International Lampwork Festival in Kobe, Japan. It was in Kobe where Minori had the opportunity to attend demonstrations by talented glass artists Loren Stump and Akihiro Ohkama. Each of these artists inspired her to try new glass techniques that she has since incorporated into her beadwork.

In early 2006, Minori moved from Japan to Canada's scenic west coast. She now calls Vancouver, B.C., home and works out of her studio at "The Onion" on the east side of the city. Working with Satake glass, she continues to create her own unique style of gorgeous Tonbodama beads.

Yoji Mitsuyuki

hamamitsuya@ray.ocn.ne.jp

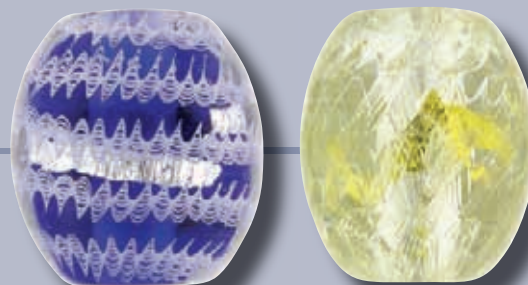
1976 Born in Tokyo, Japan

2001–2 Studied glass techniques at
Tokyo International
Institute of Glass Art

2003 Began studying lampwork under Ryo Ono

2005 Began participating in group exhibitions

2006 Opened glass studio Amamitsuya
in Osaka, Japan



FLOW

