

The Inside-out Line Tool

Written by Zak Love

Photos by Ryan Rivet

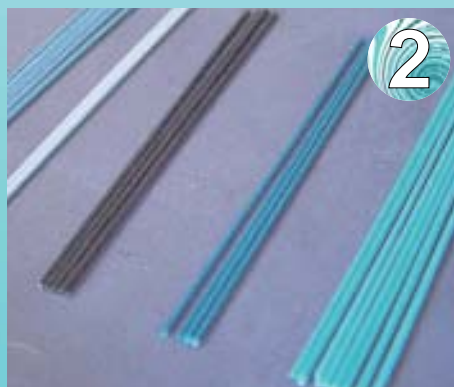
Isn't it amazing how the right tool makes life so much easier? Now something I've developed makes one of the most tedious and annoying aspects of inside-out line work nearly an effortless snap. I call it the inside-out line tool (naming suggestions appreciated). It is a device that holds color lines in position inside a piece of tubing until the torch-worker is able to heat the glass enough to make the color stick. The tool is then removed leaving the color attached to the glass.

In addition to being a huge time saver, this device has several other advantages-

- ◆ It spaces lines evenly inside the tube. This makes it easier to manipulate the glass symmetrically.
- ◆ The burning of fingers due to blow-back is eliminated.
- ◆ The consistency from one decoration to the next allows the artist to fine-tune specific processes.



Pull stringers from the color rod. Snip to 5" lengths.



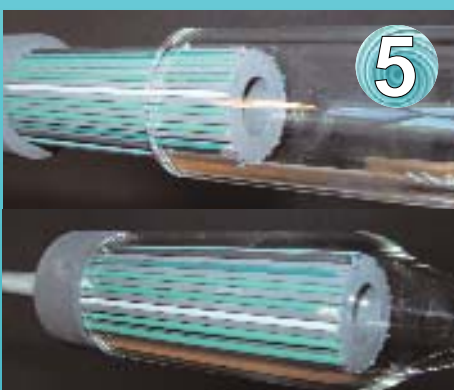
24 sticks will be used for this demo. Also available is a model accommodating 32 sticks.



Slide sticks into the grooves according to a desired pattern.



Blind holes at the end near the handle hold the sticks in place.



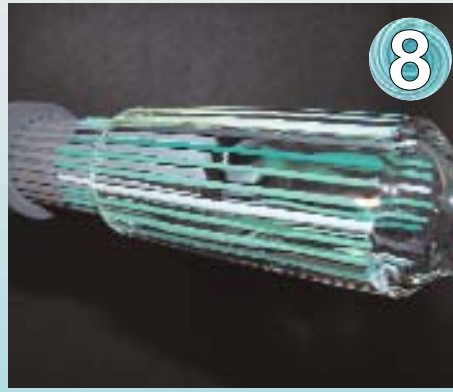
Slide the apparatus inside the tubing. Here we use 50mm heavy-wall (5mm wall thickness). Any tubing with an approximate inner diameter of 40mm will work. The thinner the wall, the more 3-D the lines will appear.



Heat the exterior of the tubing until the inside wall becomes tacky.



Marver the tubing onto the color sticks.



When all color sticks have been attached, pull tubing and color off the graphite.



Take a moment to enjoy. You can now fume the inside of the tube as desired.

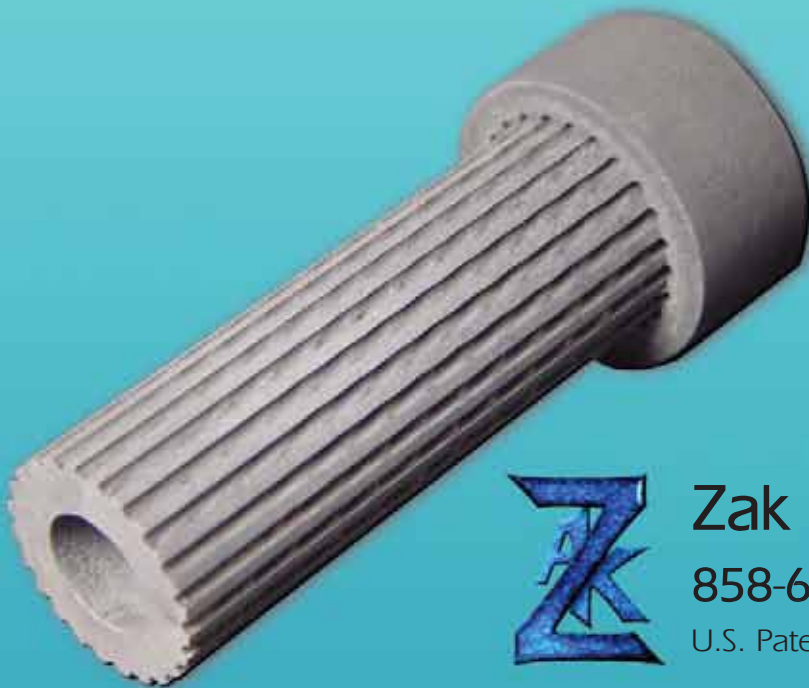


Close down the open end.



Stretch the tubing out. This further melts in the color and helps to stabilize the glass to prevent checking. You now have a large section of stock design. Take off as much at a time as you like.

Currently, the two models available (24 or 32 lines) are for use with glass having a 40mm interior diameter. This is a common size, easy to manipulate, and the resulting patterns look very good. I expect several variations to be available soon. Please contact me if you have any comments or suggestions. For order information, see the ad in this and future editions of The Flow.



Zak Love

858-603-2975

U.S. Patent Pending



How to make a reverse spiral montage using your prepared stock tubing.

1



Begin with a section of lined tubing.

2



Twist in the center.

3



Reverse the direction of the spiral, alternating between the right and left of the initial twist.

4



Gather up into a ball and pop a hole in the side.

5



Attach the ball to a section of colored tubing.

6



Draw the ball out lengthwise, evening the walls and end. Pop a hole.

7



Attach another section of colored tubing.

8



Melt all three sections together and shape as desired.

