

# A Vessel Made on a Mandrel!

Written & Photographed by Jacquelyn  
Rice of [Cnyglass.com](http://Cnyglass.com).

**Materials & Tools**  
Mandrel 5mm  
Bead Release

Clear Boro 4mm Pyrex Rod  
Boro Color Rod  
Boro Frit

Graphite Pad  
Marver with Angled Top



Heat the 5mm mandrel to a warm orange glow. Add a gather about ½ in. up your mandrel about 10-15mm in diameter.



After you have that all melted in you are going to use some clear rod to continue down and over the end of your mandrel.



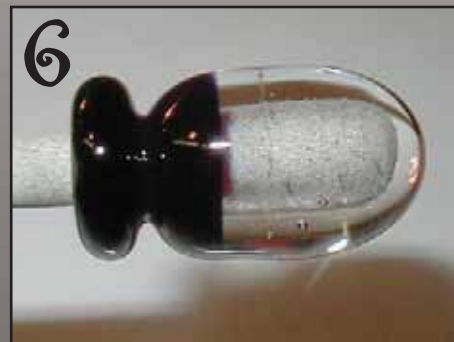
At the colored tip area cover about 5mm more of color over the clear. This will insure your color proceeds down the neck of your vessel.



Add more clear to the core. Melt in the new color and clear all in, so it resembles an exclamation point.



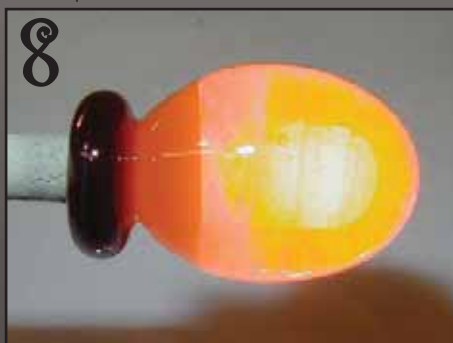
Heat the color to a bright orange glow. Slowly apply a crease all the way around the top. Reheat and apply more pressure to define the neck.



You don't want to go too thin, remember your working on a 5mm mandrel, so leave at least a couple mm in thickness.



After the top is finished you can go ahead and add a new color over the clear.



Melt in all the way.



I now add some stringers of color. You can also add some frit or even some clear stringers for a slightly different effect.



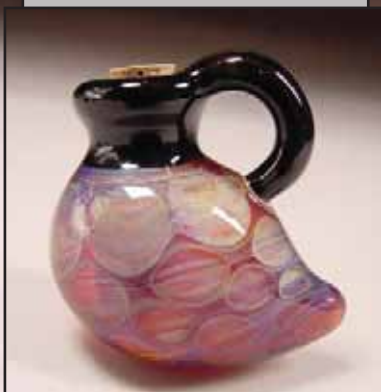
Heat just the bottom of your vessel. While it is hot evenly glide it in a spinning motion over your graphite pad at about a 45-degree angle.



This will give your vessel a nice cone shaped bottom. Your very own vessel made on a mandrel!

This little vessels are can be used for aromatherapy or to hold small healing stones. There are several different things you can do you give your vessel its very own uniqueness! Add a couple handles, raised dots or even some flowers! You can purchase small corks at a local hardware store to use for a topper.

C.N.Y. Glass Studio  
Cnyglass1@yahoo.com  
www.cnyglass.com



Draconis Glassworks colors are now available from the following distributors:

Glasscraft, Inc.  
888-272-3830  
www.glasscraftinc.com

Art Glass House  
321-631-4477  
www.artglasshouse.com

Wale Apparatus Co.  
800-334-WALE  
www.waleapparatus.com

Available Colors:  
Midnight Satin  
Dark Blue Satin  
Light Blue Satin  
Argent Ice Satin  
White Satin

New Purple Series  
Coming Soon!



For wholesale & retail distributor information please contact Glasscraft, Inc at 888-272-3830.