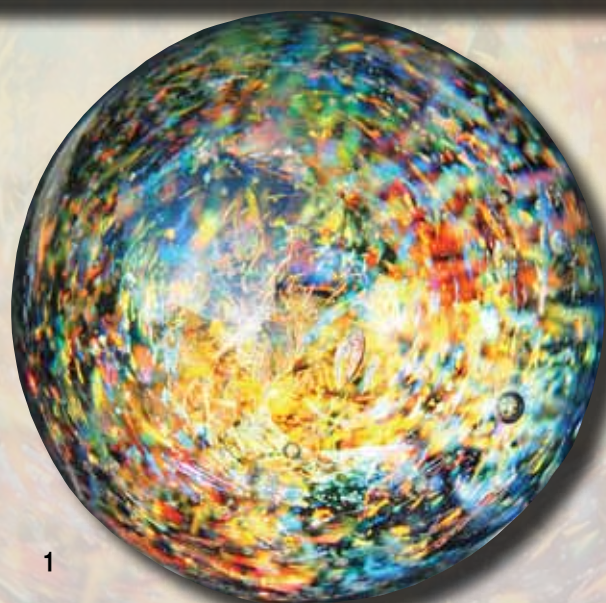


11TH ANNUAL GALLERY OF *Women in Glass*



1



2



3



4



- 1 Tracey Alfaro tracey@thealfaros.com
 2 Laurie Ament www.etsy.com/shop/glassbead
 3 Suzanne Angell sueangelldesignsinglass@gmail.com
 4 Judy Askins www.judyaskinsdesigns.com



5 Lea Avroch www.facebook.com/LeaAvrochArtGlass

6 Denise Billups-Walker www.firedancelampworkbeads.blogspot.com

7 Leslie Anne Bitgood www.crazywomanglass.com

8 Sabina Boehm glassbysabina@gmail.com

9 Ada Bording www.facebook.com/adababysglass

10 Cheryl Bott www.etsy.com/shop/EyeCBottGlass.com

11 Ivy Boyer ivyboyer5@gmail.com

Photo by David Orr

12 Cindi Brunell cindi.brunell@gmail.com

Photo by Sylvus Tarn

13 Elizabeth Bunn www.facebook.com/groups/elizabethbeads

14 Christina Callahan ccallahan@duffglass.com



11



10



12



13



14



15



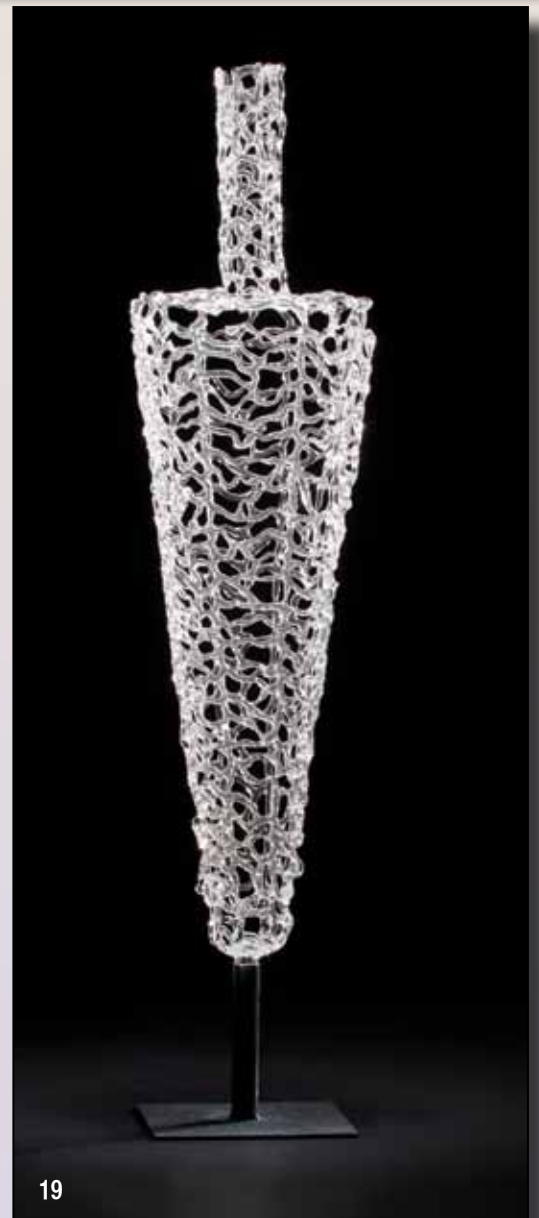
16



17



18



19

15 Deborah Carlson www.deborahcarlson.com

16 Eunsuh Choi www.choiglass.com

17 Becky Congdon www.beckycongdon.com

Photo by Ann Cady

18 Donna Conklin www.primadonnabeads.com

19 LM Cooper www.laurenmcooper.com

Photo by Leslie Patron



20



21



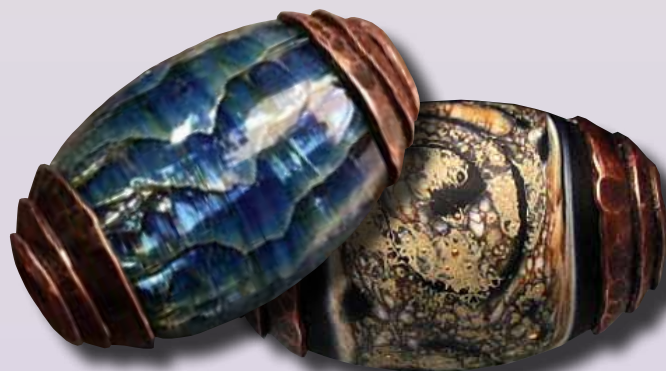
22



25



23



24

- 20 Babette Cox www.babettecox.com
 21 Deb Crowley www.debcrowley.com
 22 Holly Dare www.hollysfolly.com
 23 Sheila Davis www.stonedesignsbysheila.etsy.com
 24 Leah Deeb www.leahdeeb.com
 25 Ingrid de Haast www.glassbeads.co.za/2013/blog



26



27



28



29

- 26 Julie Delaney ojkddelaney@msn.com
 27 Brook Drabot www.brookdrabot.com
 28 Nina Dusedau ninasnotions@gmail.com
 29 Elaine Forbes www.weelainy.com
 30 Lezlie Foster www.creekbottomglass.com



30



31



33



32



34



35



36

31 Karen Fox karrinafox@att.net

32 Bernadette Fuentes www.bfuentes.com

33 Jeannie Galt www.facebook.com/jeanniesbeads

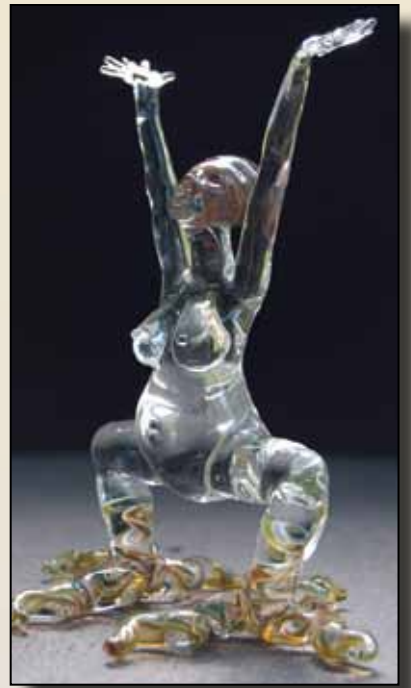
34 Rae Grout www.raegrout.com

35 Kathryn Guler www.kathrynguler.com

36 Cindy Haberman cindyllynneglass@gmail.com



37



39



40



38



41



42

37 Mary Ann Helmond www.ma-beads.com

38 Maureen Henriques pumpkinhillbeads@gmail.com

39 Brooke Holzhammer www.familytreeglass.com

Photo by Keith Marsiglia

40 Susan Hood susanhooddesigns@gmail.com

Photo by Craig Ward

41 Jelveh Jaferian www.jelvehdesigns.etsy.com

42 Rose Klapman www.beadshaper.com

Photo by Marvin Klapman



43



44



45



46



48



47

43 Christi Klein www.rapunselstower.etsy.com

44 Jill Knapp Campbell jillknapp60@gmail.com

45 Kylee Koenig www.torchedglassworks.com
Photo by Leslie O'Dell

46 Elaine LaFlex-Green beadsbyelaine@gmail.com

47 Marcy Lamberson www.studiomarcy.etsy.com

48 Glenda Long ghlong@centurylink.net



49



50



51



52



54



53

49 Jennifer L. Ludington jlludington@yahoo.com

50 Melody Lynch www.melodylynch.com

51 Claudia Martinez claudiamtz@sbcglobal.net

52 Jodie McDougall glasswhimz@yahoo.com

Photo by David Orr Courtesy of the Sweeney Museum

53 Sarah Michalik www.SarahMichalik.com

54 Aimee Milan www.polychromebeads.com



55



56



57



58



59



55 patsy monk monkpatsy2@gmail.com

56 Joy Munshower www.joymunshower.com

57 Molly Noon moon@bcsbc.com
Photo by Eric G. Kraft

58 Julie Nordine www.creditriverartglass.com

59 Michaela Pabeschitz www.facebook.com/michaelapabeschitz



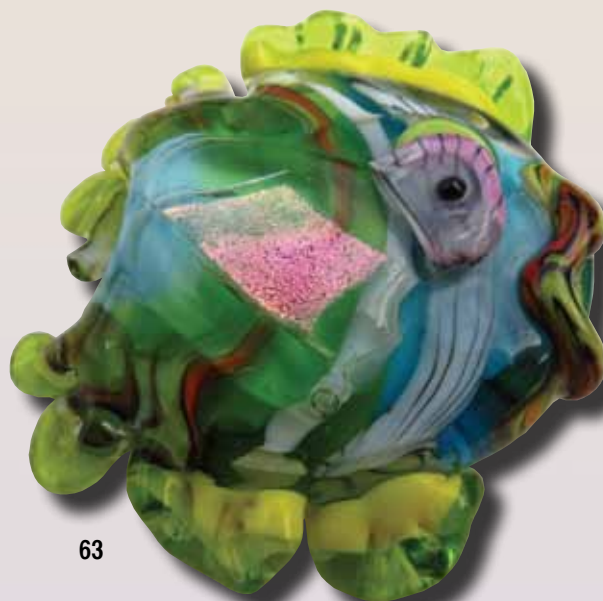
60



61



62



63



64

60 Sheila Papaioannou www.medusasstones.com
Necklace designed by Vilma Lee-Heinzinger
www.facetsofisis.com

61 Leighann Parsons scorpiolp1985@yahoo.com
62 Sharon Peters sharonflamedame@gmail.com
Photo by Jim Trenkle

63 Nancy Peterson www.beaverislandjewelry.com

64 Elizabeth Ross rossliz@mac.com



65



66



67



69



68



70

65 Frances Ross www.facebook.com/littleprawnart

66 Elaine Rusk www.elaineruskglass.com

67 Cindy Ryder cindy@onebigtreedesigns.com

68 Kris Schaible www.krisschaible.com

69 Jody Elasia Schiavo elasias@yahoo.com

70 Vicki Schneider www.expressiveglass.com



71



72



73



74



76



75

71 Heather Sellers dragonflylampworks.blogspot.com

72 Annie V. Shook www.anniedidit.com

73 Esther Silver theglassmanagerie.com

74 Barbara Becker Simon www.bbsimon.com

75 Miriam Steger-van der Schrieck www.facet-design.com

76 Monique Swinkels www.moniqueswinkels.nl



77



79



78



80



81

77 sylvus tarn rejiquar.com

78 Leslie Thiel lesliesglass@yahoo.com

79 Polly Toombs www.dragonartglass.com

80 Helene Vanderschelden www.passionatelycreated.etsy.com

81 Aja Vaz www.ajavaz.com

Photo by Doug Baldwin

82 Wendy Velasquez www.facebook.com/wendyvelasquezglss



82



83



86



84



85



87

83 Shannon Vickers www.blueblazeslampwork.etsy.com

84 Jessica Vook www.jessiroseglass.com

85 Amy Waldman amy.waldman.glass@gmail.com

86 Sandra Wapinski sandy@cobaltflame.com

87 Felicia Wartnik felicia.wartnik@comcast.net

Lampworker's Workspace Organizer

• Holds Glass & Tools •

Contact for more info:
Derrick Robbins | (541) 490-9321
dcartglass@hotmail.com



Large
18"x 16"x 14 1/2"
\$175 + shipping

*Our Events Calendar
has gotten
too big for the
magazine we had
to move it to the Web.*



Go to:

www.GlassArtMagazine.com

www.GlassPatterns.com

www.TheFlowMagazine.com

for all the newest workshops
and events in glass
around the world.

What's HOT

Ed Hoy's International is excited to announce the opening of its new **Concept Store** at the company's headquarters in Warrenville, Illinois. Glass enthusiasts can shop the huge inventory as well as enroll in classes to enhance their skills as a glass artist. The new store is open to the public, so visit today!

800-323-5668 info@edhoy.com

www.edhoy.com



His Glassworks is proud to offer the new **Covington Professional Lathe** for glass cutting and engraving. This self-contained single arm lathe accepts Morse 3 taper spindles, so it's compatible with all existing Spatzier and Merker cutting spindles. The lathe boasts a high torque DC motor with electronic variable speed control. This is the perfect lathe for cutting, engraving, and polishing and comes with a one-inch threaded spindle for immediate use of all modern cold working wheels. The lathe is available immediately online or by phone.

800-914-7463 828-2559

www.hisglassworks.com

Coatings By Sandberg (CBS) presents **Glow Pigment**. Hit it with light and watch it glow in the dark. It works with any COE glass and can be used for glassblowing, lampworking, fusing, casting, and borosilicate artwork. Visit the company's website for a how-to video plus pricing and additional information.

714-538-0888

www.cbs-dichroic.com



Evenheat Kilns now offers the **TAP Touch Screen Kiln Controller** on its kilns. The large display allows information to be presented in legible word form with nothing cryptic or confusing. Simply respond to the screen with a touch. The TAP controller is preloaded with firing schedules for glass, ceramic, or metal clay use but also allows personal firing information for full artistic control. Designed for computer networking via USB Wi-Fi or Ethernet connections,

it allows users to monitor the kiln, develop and edit programs, and perform functions from a network-connected computer, tablet, or other mobile device. Wi-fi and Web-based Apps are expected to be available by the end of 2015. Its many features include real-time graphical viewing and on-the-fly features plus diagnostic and preventative support. Visit the website to find out more.

989-856-2281

www.evenheat-kiln.com

Olympic Color Rods introduces **24" Electroplated Diamond Discs** from Molly Supply. These discs have

been tested by some of the most respected cold workers in the Seattle, Washington, area, and the feedback has been consistently positive. The discs have a magnetic backing and are available in a variety of grits from 40 to 400. All of the discs have an arbor hole of 1-1/4". Larger holes may be cut at an additional cost. Visit the company's website for more information.

800-445-7742

www.glasscolor.com



D&L Art Glass Supply is pleased to offer **Bethlehem's** new **three-stage Grand Bench Burner**. The Grand can easily produce a wide range of flames from small and gentle for fine, detailed stringer work to flames that are large enough to fully encompass 11"-plus