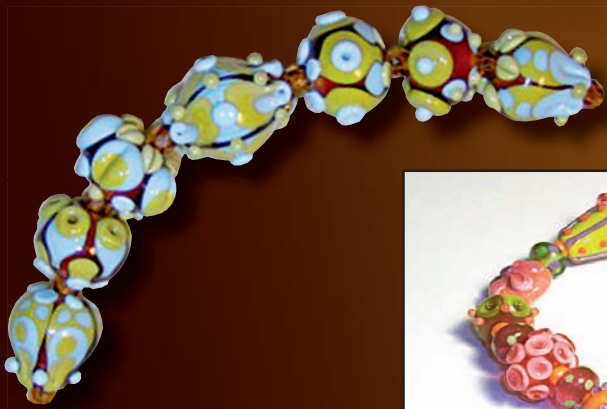


Glasscraft Emerging Artist Award



Genea Crivello-Knable

Genea Crivello-Knable's creativity began to show when she was just a child. Her teachers began to notice her special interest in art and pointed this out to her mother, who supported her artistic appetite by introducing her to polymer clay. At the age of fifteen, she was the youngest applicant accepted into an art show in her home town of Racine, Wisconsin. During her high school years she took many classes in art, working in everything from drawing and painting to metalsmithing and fiber arts.

A few years earlier, Genea had actually gotten into beading during a trip to visit family in Sonoma, California. She met very interesting people on the streets of San Francisco, including a lovely woman and her daughter who created macramé designs with gold thread and beads. Genea and her mother found the local bead stores, started their own bead collection, and began making jewelry. It wasn't until Genea began working at Bead Boutique in Kansas City, Missouri, that she had her first experience in glass while taking a class in lampworking. She continued her training by reading many books, and most of what she learned came from Corina Tettinger's book, *Passing the Flame*.

Genea is currently a color tester for Creation is Messy and a frit tester for Iron Mountain. She has been published in bead magazines and online sites including *Beadwork Magazine*, Corina Tettinger's *Spotlight on Magical Color Reactions*, *Creative Jewelry*, and The-

AnnealerMazagine.com, and was the April 2009 Soft Flex Featured Designer. She continues to travel to shows, teach classes, and sell her beads, thoroughly enjoying the opportunities that she has to chat with other artists and share creative ideas.

Look for more of Genea's work on Blogspot, Twitter, Facebook, and Flickr and at www.genea.etsy.com.

Glasscraft Inc.
Since 1970

How can I qualify for this award?

Please join us by participating in the Glasscraft Emerging Artist Award. Just send your artist profile (100 to 125 words), high resolution digital photos of your work, contact information and photographer's name on CD to:

Glasscraft Emerging Artist Award,
c/o The Flow, PO Box 69,
Westport, KY 40077