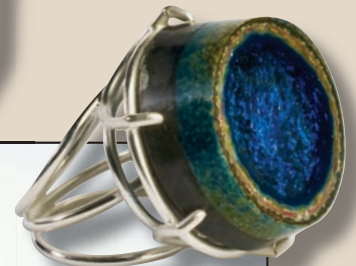


Glasscraft Emerging Artist Award



Sarah Lewis

Sarah Lewis was born and raised in Upstate New York and began working with borosilicate glass in 2000 at the Museum Glass Works in Ballston Spa, New York. She quickly fell in love with the art form and set up a home studio. Sarah has since attended several lampworking workshops and has learned techniques from friends and by practicing her art over the years.

While living in Arizona, Sarah discovered jewelry and metalworking at Arizona State University and was introduced to lapidary techniques at the Mesa Art Center. She instantly found the excitement of combining these disciplines with her glasswork. Sarah continued her studies at the Savannah College of Art and Design where she earned her degree in Metals and Jewelry. She has found that when you can hot work and cold work glass and then combine it with stone and set it in silver, the possibilities are truly endless.

Sarah's current focus is on jewelry, which she considers to be small-scale wearable sculpture. She enjoys the preciousness and functionality of jewelry and the way it interacts with the body. Sarah now lives and works in Philadelphia, Pennsylvania, and her interests have expanded to include fashion and accessories. Sarah's work, which is currently for sale in a few galleries, has won several awards and has been included in juried shows and exhibitions.

You can find more of Sarah's work at www.sarahlewisjewelry.com.

Glasscraft Inc.
Since 1970

How can I qualify for this award?

Please join us by participating in the Glasscraft Emerging Artist Award. Just send your artist profile (200 to 250 words), high resolution digital photos of your work, contact information and photographer's name on CD to:

Glasscraft Emerging Artist Award
c/o The Flow
PO Box 125
Marietta, TX 75566