

Glasscraft Emerging Artist Award

Joe Peters

Joe Peters grew up in western Massachusetts surrounded by an environment that was rich in the arts. After living and scuba diving in various areas of Central America, he gained an appreciation for underwater plants and amphibian life and has tried to integrate those elements into his handblown glasswork through flameworking. To Joe, glass is an exciting and fast-paced medium that allows him to create fine detail in the color and form of his sculptural pieces.

Torchwork gives Joe the flexibility to create the detail demanded by his subjects. Working with colored, transparent, and dichroic glasses and metals provides him with limitless possibilities for creating sculptural form and texture.

Nature is the subject of most of his work, and it provides endless opportunities to explore the depth, color, and reflective properties of glass. He especially likes the spontaneity of the glass and the fact that when he starts a piece, he may have something in mind but can never be exactly sure what the finished piece will be.

Visit www.joepetersglass.com to view more of Joe's work.

Photography by Victor Janczar



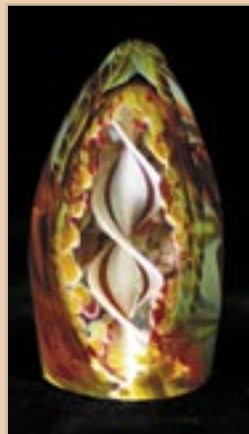
Robert W. Kincheloe

Robert Kincheloe has been working with glass since 1997, beginning with lampworked beads and then progressing to furnace glassblowing, flameworking, scientific glassblowing, sculpture, murrine, encasements, and cold working. Over the years he has helped to set up several small studios and encouraged numerous individuals to take a greater interest in the art of glass working. He is currently the Studio Coordinator and Resident Artist at the Washington Glass School in Mt. Rainier, Maryland, as well as a studio artist at the Workhouse Art Center in Lorton, Virginia.

Robert believes that glass has incredible potential for form and variation that allows for the medium to be ever explored. The beauty of glass, for Robert, is that every process is another tool and that through time and experience we build a chest of techniques that allow us to better explore our thoughts and visions. With an interest in Production Quality Management, Robert takes a mathematical approach to design. His present focus is on clean lines and simple designs. Robert hopes to continue to grow and help expand the glass community through classes, demos, and lectures.

Visit www.bryglass.com to view more of Robert's work.

Photography by Pete Duvall



Lee Silveri

Lee Silveri began lampworking in 1998. He enjoys creating both hollow and solid works and tends to make traditional forms with contemporary elements. Working at the torch gives him the opportunity to have a direct relationship with the medium in its fluid state. The fine lines, smoothness, colors, and the way three-dimensional patterns swirl between only a few millimeters of wall thickness, yet appear so vast, amazes Lee today as if it were the first time he has seen them.

Lee has come to realize that the beauty of glass is as much in the process as it is in the finished product. In order to progress to the next piece, it is necessary to learn from mistakes, take what is effective, and try something different the next time around. He has continued to learn by studying at glass schools across the country, including Pilchuck and The Corning Museum of Glass. Lee is not only working glass itself but is also finding out how to turn glass art into a successful business. He is currently learning photography and marketing and has recently started to teach glass.

You can view more of Lee's glass art at www.leesilveri.com

Photography by Lee Silveri



Glasscraft

What is the Glasscraft Emerging Artist Award?

The Glasscraft Emerging Artist Award will be awarded to up-and-coming flameworking artists who have demonstrated outstanding skill and who have contributed to the lampworking community through technical and artistic innovation.

How many artists will be featured?

The award is given to twelve lampworking artists per year, one of whom will become the Glasscraft Emerging Artist.

How can I qualify for this award?

Please join us by participating in the Glasscraft Emerging Artist Award. Just send your artist profile (100 to 125 words), high-resolution digital photos of your work, contact information, and the photographer's name on CD to:

Glasscraft Emerging Artist Award
c/o The Flow
PO Box 69
Westport, KY 40077